



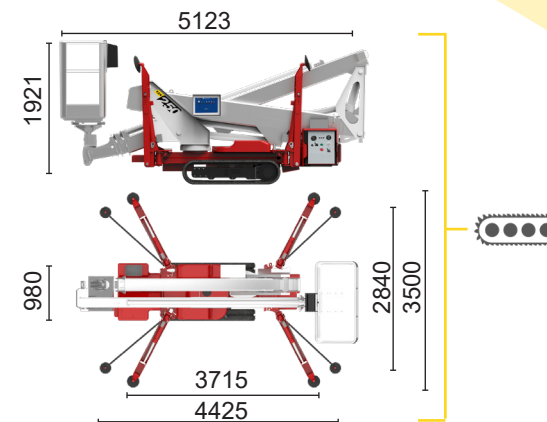
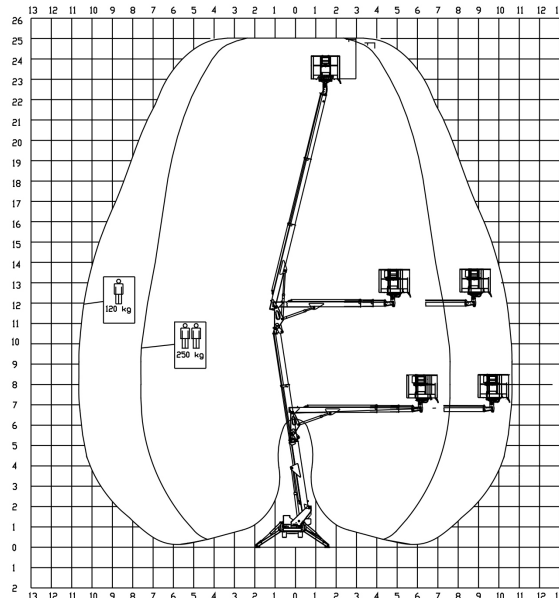
BI-ENERGY



Diesel
10,6 kW



Single-phase
Electric motor
230VAC - 2,5 kW



TZX 250/C



25 m

10,6 m

250 kg

360°

140x70 cm

90°+90°

2,84-3,5 m

19%

23%

2,4 km/h

2660 kg

19,5 kN

2,05 kN/m²

3,71 kN/m²

Available power options:

BI-ENERGY (DIESEL+AC)

ECO (AC+BATTERY)

Characteristics and technical data are informative only and subjected to change without notice.

Palazzani Industrie S.p.A.

Via del Pavione, 4 - 25050 - Paderno F.C. (BS) - Italy

Tel. (+39) 0306857073

info@palazzani.it

www.palazzani.it



NC 801 A 22